

## BLUETOOTH TEMPERATURE DATALOGGER

### DESCRIPTION

The Pixie Temp Bluetooth temperature data logger allows you to track the temperature and geolocation of your refrigerated trucks in connection with our GPS tracker and Thermotrack Webservice.

Waterproof and solid, the Pixie Temp adapts to many environments.

### FUNCTIONS



TEMPERATURE



BLUETOOTH



WATERPROOF

### MAIN FEATURES

- Temperature monitoring
- Monitoring the cold chain of a refrigerated vehicle
- Bluetooth connection
- Coverage of 500 meters in free field around the datalogger



### EN 12830 COMPLIANT

The Pixie Temp dataloggers comply with the EN 12830 standard, which defines all the functionalities and technical requirements to be respected for the temperature control of food products.

## TECHNICAL SPECIFICATIONS

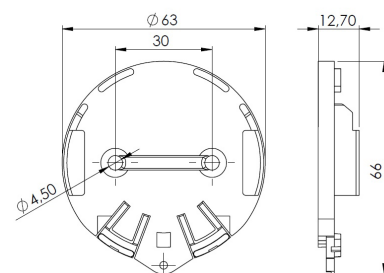
### PIXIE TEMP

Communication	Bluetooth up to 500 meters (free field)
Temperature range	-40/+85°C
Accuracy	± 0.5°C
Autonomy	Up to 5 years
Memory	4000 points
Case	Waterproof IP 68
Size and weight	Diameter 57 mm - Height 20 mm - 41 grams
Compliance	EN 12830
Mounting	In your refrigerated compartment : with adhesive or screw-on mounting bracket

## MOUNTING SYSTEM

The bracket supplied with the Bluetooth temperature datalogger allows you to have a resistant mounting system, even in case of strong vibrations during transport, or during shocks.

- **Diameter** : 63 mm base
- **Height** : 12,7 mm
- **Weight** : 20 grams



## GET YOUR TEMPERATURE GRAPHS IN REAL TIME

Pixie Temp Bluetooth temperature dataloggers are fully compatible with the GPS beacon and our Thermotrack Webservice real-time monitoring platform.

Thermotrack Webservice allow you to :

- To know the temperature in real time of the vehicles.
- Track the position of refrigerated vehicles by coupling the Pixie time datalogger to our GPS beacon.
- To consult the temperature graphs of your vehicles.
- To receive alarms in case of non-conformity temperatures.
- Manage different user accounts and their access rights.



**Plug and Track**  
**A Proges Plus activity**  
Lille - Lyon - Nantes  
2, rue de la République

59780 - WILLEMS - France  
Tél. + 33 3 20 64 63 63  
info@plugandtrack.com  
www.plugandtrack.com