

[SOLUTION SHEET]

REAL TIME MONITORING OF REFRIGERATED TRUCKS

■ HOW IT WORKS

Monitor the temperature of refrigerated vehicles in real time with the Pixie Temp bluetooth temperature datalogger and Thermotrack Webserve. A complete, easy-to-install solution that includes:

- A Bluetooth temperature datalogger Pixie Temp
- A GPS tracker
- GSM connection for 5 years
- Real time monitoring of the fleet on computer, tablet and smartphone
- Reception of alarms by Notification, Email, SMS and Siren on PC in case of exceeding temperatures

PIXIE TEMP Bluetooth temperature datalogger



Pixie Temp is a Bluetooth temperature datalogger. Waterproof and robust, it fits perfectly in a refrigerated vehicle. It transmits the temperature measurement in a radius up to 500 meters.

TECHNICAL SPECIFICATIONS :

- Bluetooth communication up to 500 meters (free field)
- Temperature range : -40/+85°C
- Accuracy : $\pm 0.5^{\circ}\text{C}$
- Battery life : up to 5 years
- Memory : 4000 points
- IP 68 waterproof case
- Diameter 57 mm - height 20 mm - weight 41 grams
- EN 12830 compliant
- Mounting in the refrigerated compartment with adhesive or screw-on mounting bracket

GPS TRACKER

The GPS tracker provides Bluetooth connection with 1 or 2 Pixie Temp Bluetooth dataloggers. Thanks to its integrated SIM card, it transmits temperatures and GPS position at 15 minute intervals. It attaches directly to the vehicle's OBD socket (*diagnostic socket*), thus ensuring its power supply. The internal battery allows operation when the vehicle's ignition is off.



TECHNICAL SPECIFICATIONS :

- Geolocation systems : GPS, GLONASS, GALILEO, BEIDOU, QZSS, AGPS
- Cellular technology : LTE CAT1, UMTS/HSPA+ and GSM/GPRS/EDGE
- Power supply : 10 - 30 V DC with overvoltage protection
- Internal battery : 170 mAh Li-Ion 3.7 V (0.63 Wh)
- Bluetooth connection : 4.0 + LE
- Dimensions : 67,2 x 49,6 x 25 mm (L x W x H)
- Weight : 63 grams
- Connection : OBDII Socket
- Internal high gain GPS and cellular antennas

Plug and Track
A Proges Plus activity
Lille - Lyon - Nantes
2, rue de la République

59780 - WILLEMS - France
Tél. + 33 3 20 64 63 63
info@plugandtrack.com
www.plugandtrack.com

5 YEARS OF GSM CONNECTION INCLUDED

The system is delivered preconfigured with an integrated SIM card and a communication package that provides 5 years of transmission every 15 minutes with 2 temperature dataloggers.

We have agreements with over 120 operators worldwide. This is a great convenience for you because you don't need to worry about taking GSM subscriptions.

REAL-TIME MONITORING WEB PLATFORM

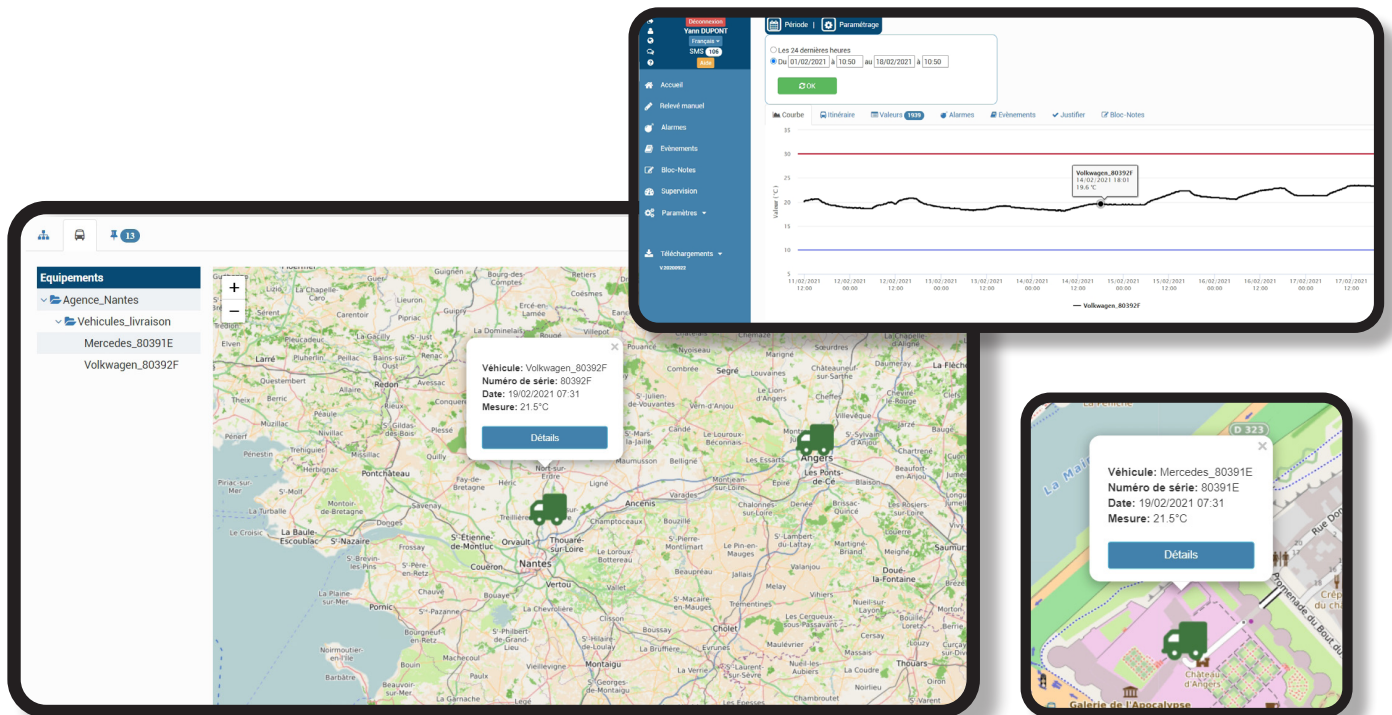
On the Thermotrack Webserve web platform, from a PC, a tablet or a smartphone, you can follow your refrigerated vehicles in real time.

The map display allows you to know exactly where your vehicles are and what the temperature is on board. The map displays the vehicles that are exceeding the temperature.

If the temperature thresholds are exceeded, you will receive alerts by email, SMS, telephone notifications or audio and visual sirens on your PC.

THERMOTRACK ALSO GIVES YOU :

- The path traveled by each vehicle with the history of the measurements
- Temperature graphs
- Periods of exceeding temperature
- The list of values with Min, Max and mean values
- Exports to Excel
- Automated PDF reports sent by email



Plug and Track
A Proges Plus activity
Lille - Lyon - Nantes
2, rue de la République

59780 - WILLEMS - France
Tél. + 33 3 20 64 63 63
info@plugandtrack.com
www.plugandtrack.com